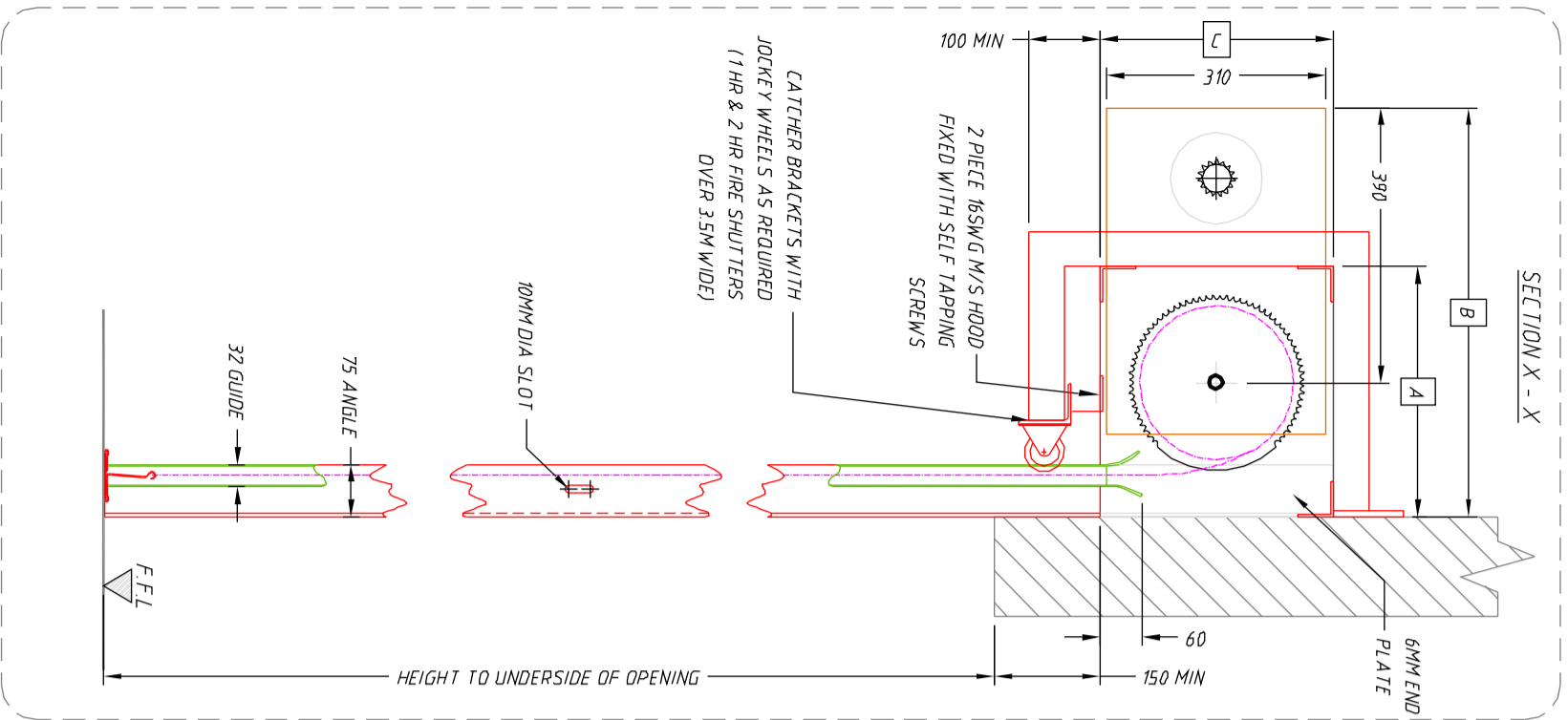
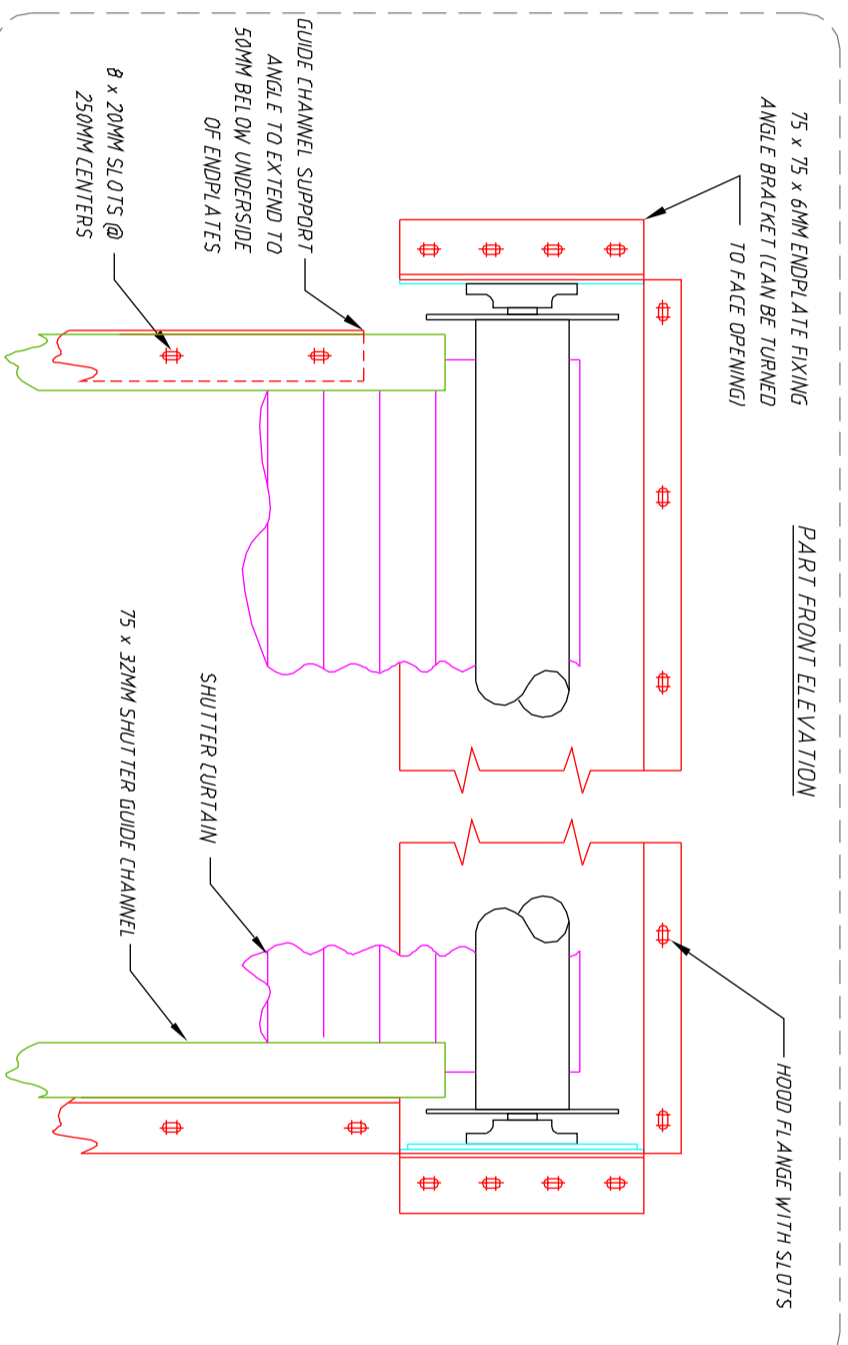


SECTION X - X



PART FRONT ELEVATION



NOTES:

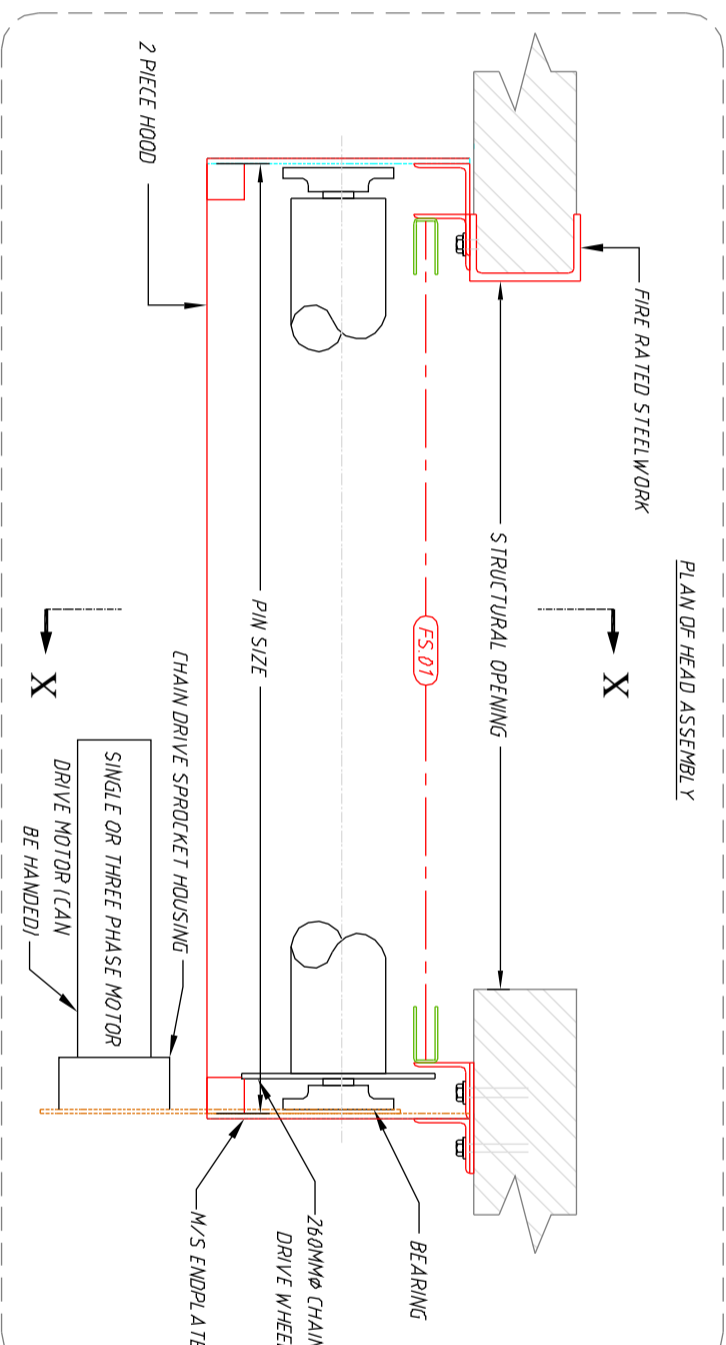
< VERY IMPORTANT >
All internal/external panels in way of shutters **MUST** be easily removable to permit access to **full length of shutter barrel** for adjustment, maintenance and repair.
All manual over-ride positions **MUST** be agreed by Architect **BEFORE** shutter installation.

We will provide for your installation, a female adaptor which is to be wired into the fused spur provided by others. This is to be completed prior to Armourpost's attendance.

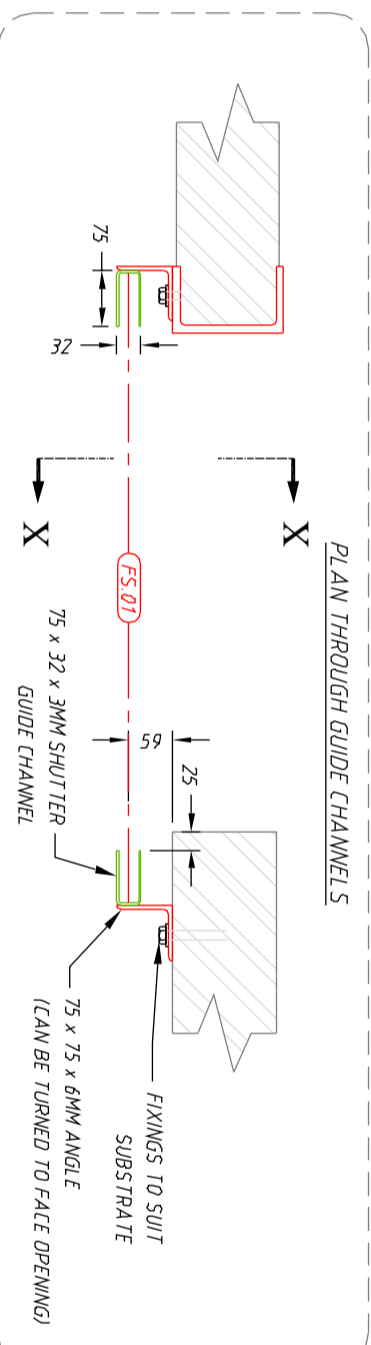
MANUFACTURING SIZES (ARMOURPOST TO CONFIRM)

MAX. HEIGHT	A	B	C
UP TO 3500MM	355	580	330
UP TO 7000MM	475	640	450

PLAN OF HEAD ASSEMBLY



PLAN THROUGH GUIDE CHANNELS



ARMOURPOST

LIMITED

Saltmeadows Road, East Gateshead Industrial Estate
Gateshead, Tyne & Wear. NE8 3AH
Tel: 0191 478 7878 Fax: 0191 478 2588

TITLE:
TYPICAL FIRE SHUTTER SIZES
AND FIXING DETAILS

SHUTTER REF:
STANDARD FIRE SHUTTER
1HR, 2HR & 4 HR

BY:	DWG No:	REV No:
J.K.	APS0509	1