

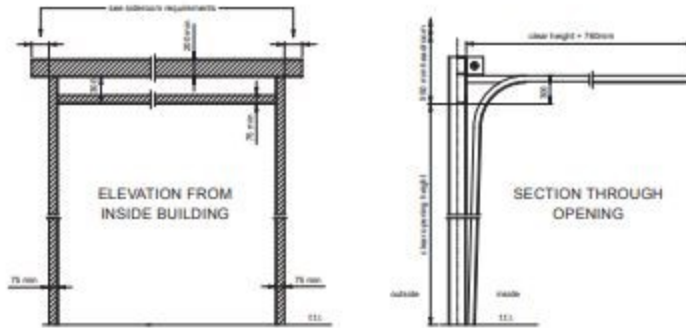
# Summary of Structural Steelwork Drawings

## STANDARD LIFT TRACK

### SIDEROOM REQUIREMENTS:

Push up doors (up to 3000 x 3000)	150 x 150mm
Chain hoist doors	350 x 150mm
Electrically operated doors	400 x 150mm

PLEASE NOTE: All fixing faces (shown hatched) must be flush and in the same plane.

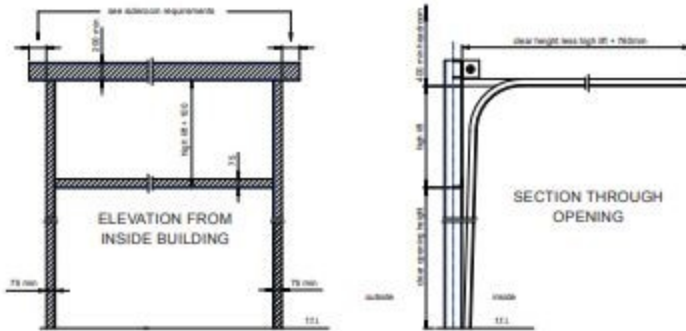


## HIGH LIFT TRACK

### SIDEROOM REQUIREMENTS:

Push up doors (up to 3000 x 3000)	150 x 150mm
Chain hoist doors	350 x 150mm
Electrically operated doors	400 x 150mm

PLEASE NOTE: All fixing faces (shown hatched) must be flush and in the same plane.



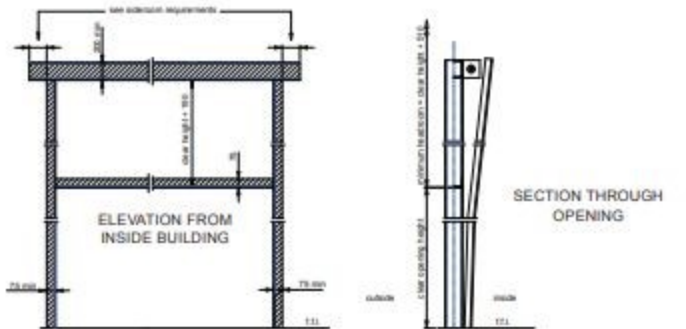
## VERTICAL LIFT TRACK

### SIDEROOM REQUIREMENTS:

Push up doors (up to 3000 x 3000)	150 x 150mm
Chain hoist doors	350 x 150mm
Electrically operated doors	400 x 150mm

FOR DOORS OVER 5500mm IN HEIGHT  
PLEASE CONSULT OSA

PLEASE NOTE: All fixing faces (shown hatched) must be flush and in the same plane.



## LOW HEADROOM LIFT TRACK

MAXIMUM DIMENSIONS:	5000 x 5000mm
MAXIMUM WEIGHT:	300kg's

PLEASE NOTE: All fixing faces (shown hatched) must be flush and in the same plane.

